

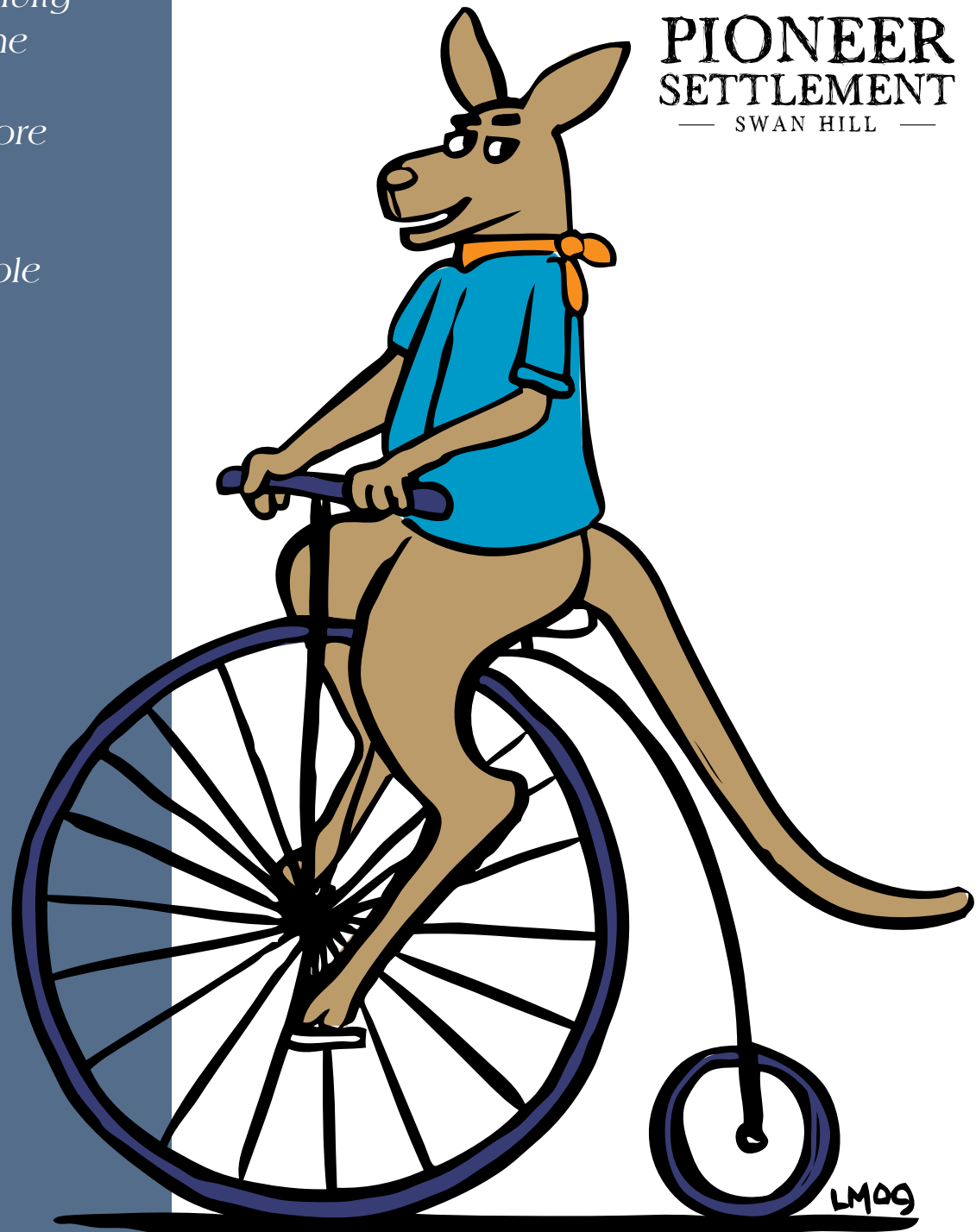
Education Programs

Swan Hill and District

Live and learn Pioneer history and the early development of Australia with our hands on activity programs, visit the farms, meet the people, and explore the environment. Educational programs available all year round and structured to suit all student levels



**PIONEER
SETTLEMENT**
— SWAN HILL —





Swan Hill is an exciting destination for Educational School Camps. The Swan Hill region offers excellent camp facilities and a fantastic range of unique and diversified educational activities that are VELs relevant and structured to suit all student levels.

I have enclosed a description of the educational programs available at the Pioneer Settlement in Swan Hill, which is NARTA accredited, and the programs offered for students by the district attractions. I have also enclosed a sample of the itineraries that we can put together so that the students have a fun-filled, enjoyable and educational school camp. The activities can be mixed and matched to suit year level curriculums and student levels.

The Swan Hill Pioneer Settlement and district educational attractions are regularly assessing the programs and services that are offered to school groups to ensure that the services are of the highest standard and meet the current curriculum requirements.

Please feel free to contact me anytime to discuss school camp options and available programs. I welcome the opportunity of designing an itinerary for your students that will make their school camp experience a memorable one.

I look forward to being of service to you and your students.

Kindest Regards,

Glynis Pitts
Bookings Officer

Pioneer Settlement

Phone: (03) 5036 2416

Fax: (03) 5032 1096

E-mail: gpitts@swanhill.vic.gov.au

www.pioneersettlement.com.au

All activities featured in this brochure can be taken as part of a package or as individual activities.



**PIONEER
SETTLEMENT**
— SWAN HILL —

An initiative of



Program Summary

Humanities

- Concept of time: chronology and sequencing; change and continuity; past, present and future in a range of historical contexts
- Exploration and development of timelines: sequences of events
- Identification of historical sources: recognition of differences between individual types of historical sources, framing of appropriate questions
- Histories of cultural groups
- Aspects of how places have changed over time
- Awareness of significant events and associated key people
- Comparison between aspects of life in the past and present

English

Listening and speaking

- attentively listen to others and respond appropriately to what has been said
- contribute relevant ideas and ask questions to clarify meaning
- summary of main ideas after listening to others' presentations

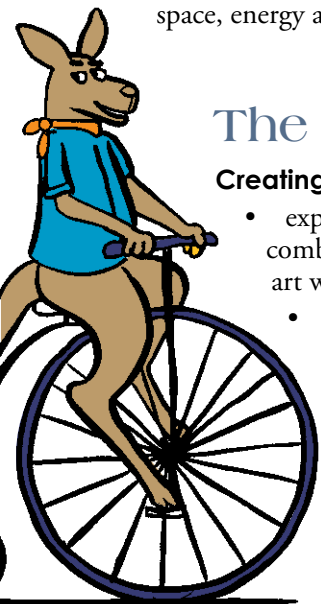
Reading and Writing

- concepts of print (upper and lower case, font)
- use of variety of writing tools

Science

Science knowledge and understanding

- knowledge of everyday changes relating to matter (eg steam power; cream to butter)
- knowledge of how change related to matter, space, energy and time may be of benefit to society



The Arts

Creating and composing

- experimentation with different combinations of materials to create art works for a purpose
- preparation of drama works for a presentation in a particular location
 - incorporation of appropriate skills, techniques and processes when interpreting and performing drama works influenced by historical traditions



Interpersonal development

- opportunity to display co-operative behaviours
- opportunity to engage in teamwork

Communication

Listening, Viewing and Responding

- attentiveness to as well as understanding of ideas and information
- relevance in the framing of questions about presentations
- explication of interpretations of others' oral presentations

Thinking Processes

- questions and wondering are encouraged
- opportunity to explore ideas creatively by engaging in new ideas and other perspectives



a day on the farm

An all encompassing adventure into the world of farming, sheep shearing, raising stock, pheasants and dairy cattle. Enjoy morning tea in Lake Boga and lunch along the Murray River. Experience life on the farm and listen to the stories passed down from generation to generation.

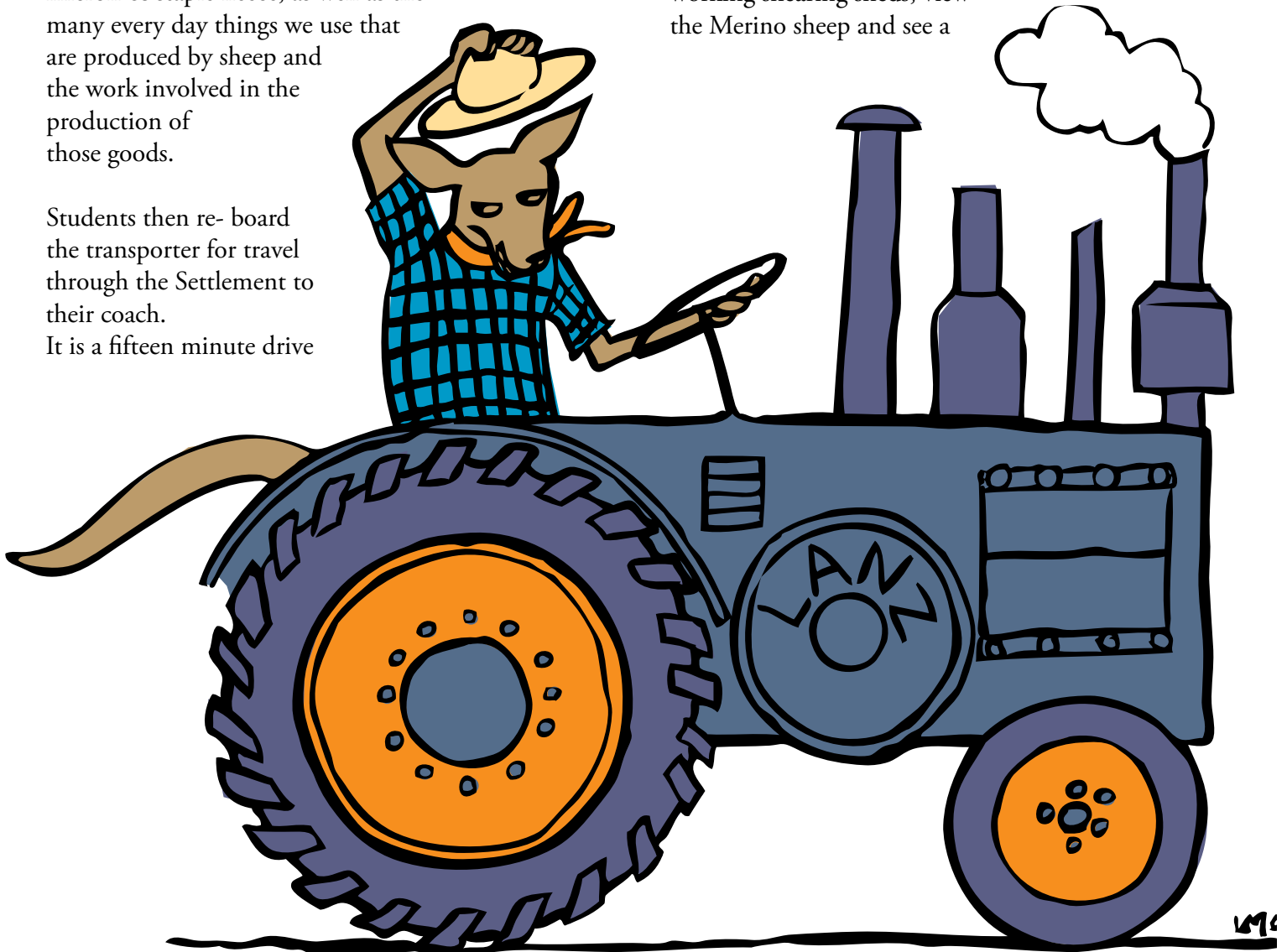


After a warm welcome by staff at the Pioneer Settlement, students will board our tractor-transporter and will be driven to the Pioneer Settlement Shearing Shed for an entertaining lesson on "life as a sheep". They will explore the woolshed; learn about the crimp, micron & staple fleece, as well as the many every day things we use that are produced by sheep and the work involved in the production of those goods.

Students then re-board the transporter for travel through the Settlement to their coach. It is a fifteen minute drive

to where students can enjoy a morning tea on the shores of Lake Boga. (BYO)

Then it's off to the Sharlea Shearing Shed also at Lake Boga, where students tour the working shearing sheds, view the Merino sheep and see a



shearing demonstration. Sharlea produces fine micron Merino wool which is exported worldwide. An informative narration is given on how the wool is produced and the markets where it is sold.

Back in Swan Hill, students can then enjoy a BYO picnic lunch at Riverside Park (this will usually be provided through your place of accommodation) before boarding their 20 minute coach ride to the Pheasant Farm.

The Pheasant Farm is the largest commercial pheasant farm in Australia. 26,000 birds are produced every year for restaurant markets and an interesting narration is given as visitors tour the walk-in aviaries and hatchery. A huge variety of exquisite coloured pheasant, pea birds and different fowls are on display. The chicks in the hatchery are always a delight. Prior to departing, refreshing afternoon tea (BYO) is available in the gardens.

Heading back towards town, students will travel across Chillingollah Rd. to the Murray Valley Highway, through Swan Hill and out to Glowery's Rotary Dairy. This working dairy milks morning and night all year round. This is an amazing activity to see and students are welcome to stand on the viewing platform and watch it working. An interesting presentation is given on how the milking industry works. Students can hand feed the calves (in season).



Other farming activities which are available in this itinerary are:

1. Sonre Farms: Woorinen (on the way to the Pheasant Farm) producing olives, almonds & pistachios.

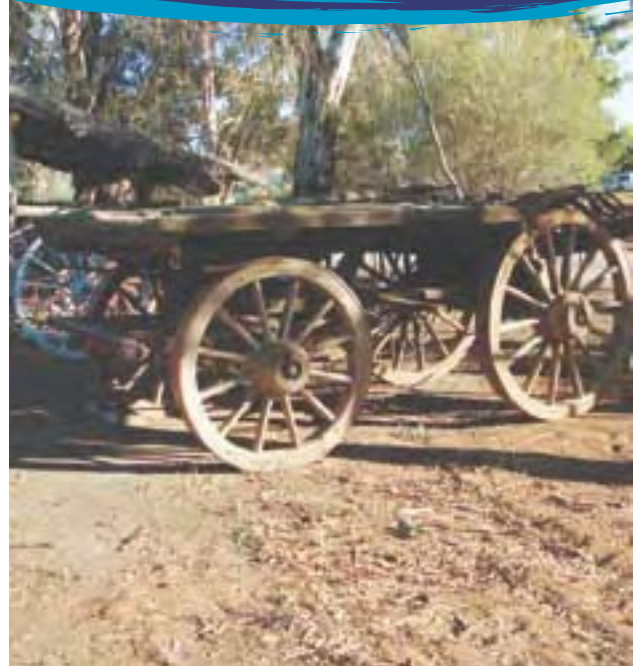
2. Swan Hill Livestock Market: Operating alternate Tuesdays and Thursdays. The stockyards are full of action, with livestock being weighed and sold where the auctioneer bellows prices and slams his hammer on the completion of a sale. There is a safe seated area around the sale arena for viewers to watch the action. (Self-guided)



our past and pioneers



Step back in time and experience life the way Pioneers and Settlers did, where everything from forging metal to washing clothes was all done by hand. Participate in your very own old fashioned creations and enjoy lunch Pioneer Style. Visit beautiful homesteads and learn about inventions that your great grand parents used in their daily lives.



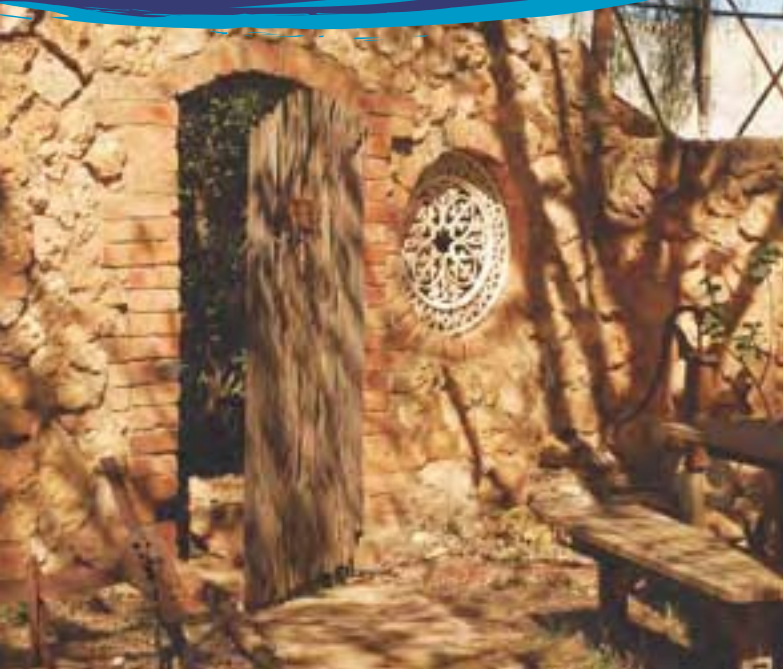
Students arrive at the Pioneer Settlement, in Swan Hill, to explore Australian history and develop an understanding of Pioneer life and the early development of a very harsh country.

While participating in the Pioneer Activity Program students are given hands-on experience in building drop-log walls, cross-cut sawing, building a Mallee root fence, making a forged nail with the Blacksmith, creating their own amusement by making peg dolls, playing pioneer games and learning how strict school really was, when they attend the Pioneer School of the 1800's.

The Pioneer Activity Program is a full morning (or afternoon) exercise so students are now ready for a break, some lunch - Pioneer Picnic style of course, before the day continues. A delightful lunch can be enjoyed on the Pioneer Settlement ground or it is only a short distance to the very beautiful Riverside Park which has excellent amenities.

Students now board their coach and take a 15 minute drive to the historic Tyntyndyer Homestead (1846)

On arriving at the Tyntyndyer Homestead they are gathered together to enjoy entertaining stories about the early history of this area – from the time of the WattiWatti people “farming” the land, through the years of European settlement to the present day. They see how the drop-log house was built, hold 150 year old



hand-made clay bricks, explore the underground cellar filled with aboriginal artefacts, coin collections & egg collections - the original school house & tutors room – filled with school days memorabilia from the 1800's and curiosities as well as the chock-log cabin kitchen which houses a floor to ceiling collection of domestic inventions and curios.

The tour of Tyntyndyer Homestead itself is a totally entertaining experience for students, during which

they discover the many and varied inventions that the pioneers used on an everyday basis and how these relate to the things the students use today.

This fascinating homestead tour is both educational and memorable.

Students then board their coach and travel back towards Swan Hill, stop off for a visit at Speewa Ferry; one of the last ferries from the 1800's still operating on the Murray, and see how the pioneers transported their goods, stock and wagons across the Murray River before bridges were built.

Upon arriving back at the Pioneer Settlement students will dress up in their "Sunday Best" Pioneer Style at the Settlement's Costume Shop and have their souvenir photographs taken (using their own or the school's camera). This is a fantastic opportunity with great props and backdrops for authentic photos and lots of fun.

Students then have free time to explore the Pioneer Settlement buildings and shops. This is an ideal time for them to undertake one of the discovery trails around the settlement.



transport and technology



Become part of yesterday's world with its different modes of transportation from the Penny Farthing bicycle to the steam locomotive train. A time where there was a combination of horse drawn carriages and horseless carriages. A time when steam engines were a way of life and Letterpress printing and Morse Code were the only means of communication.

Students arrive at the Pioneer Settlement and while being escorted through it they learn about transportation during the early days of Australian settlement - stopping along the way to investigate the bullock dray -1830's, the Cobb & Co Coach - 1854,

the PS Gem - 1876, the Steam Locomotive - weighing 100 tonnes - 1890.

When students have completed their discovery tour of river, road and rail transport in the Settlement, they have a 10 minute break for morning tea.

They now take time out to experience the fun of Pioneer travel with horse drawn vehicle and vintage car rides.

At the Steam Engine Machinery Shop, The Fowlers Steam Engine, built in 1913, powers the whole machinery shop and is a fascinating insight into how alternative power can be generated. At the machinery shop students see the boiler at work, the belt driven machinery operating and are given an excellent presentation on how "steam power" is generated and used.



Students now take a break for lunch (1 hour) BYO picnic or lunch can be catered for by the Pioneer Settlement Lodges.

After lunch, the first stop for the students is the Print Shop where they will be fascinated by the technology of the early print machines still in use. An excellent presentation is given on how the machines are set up for printing, how lettering is selected, different fonts used, ink application and letterpress printing process. There are three operational early letterpress print machines in the shop.

Students now continue their discovery day by heading to the Post Office for a lesson on Morse code in which they are given pads, pencils and a code sheet. Each student chooses a three or four letter word, translate it into code and are then given instructions on how the Morse code machine works. Each student can transmit their word in code which can be deciphered by the

other students. They will enjoy this hands-on lesson in early communication technique.

It's now time for students to head to Horseshoe Bend Wharf (in the Pioneer Settlement) and board the Paddlesteamer PS Pyap for an exciting informative cruise on the Murray River.

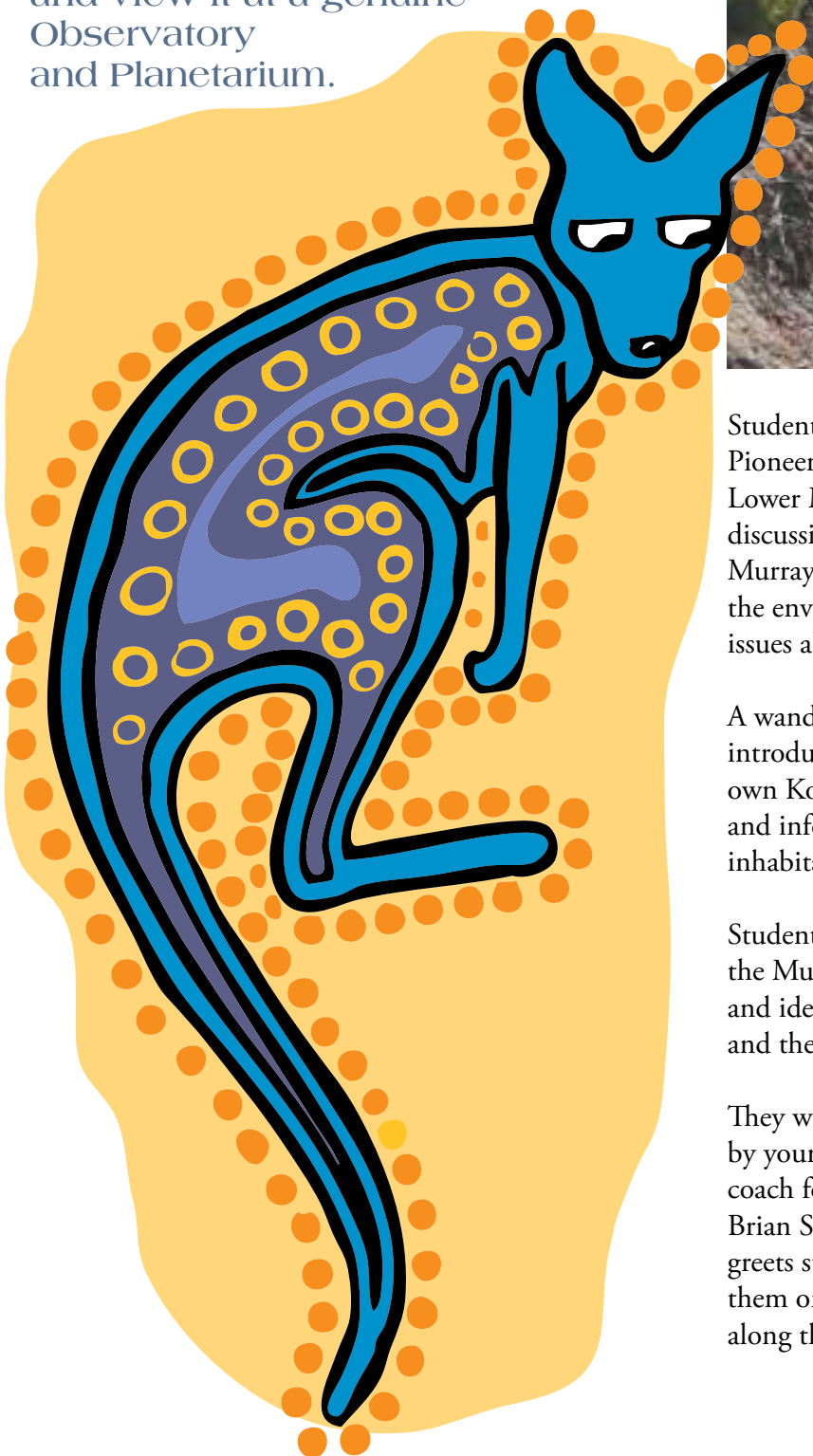
Students depart the wharf aboard the Pyap which was built in Mannum in 1896 as a trading boat. The Captain gives an excellent narration on the history of river transport, and the role it played in opening up inland Australia for settlement, while they can relax and enjoy the beautiful natural scenery of this mighty river.

Students return to the Settlement Wharf and now have free time to further explore the Pioneer Settlement shops.



the world around us and above

Discover the importance of our environment's biodiversity, our forests, soils, plants and the power of the Mighty Murray River. Enjoy a relaxing coach ride from the Pioneer Settlement to the Nyah State Forest and on to Lake Boga. Learn about outer space and view it at a genuine Observatory and Planetarium.



Students are welcomed by staff upon their arrival to the Pioneer Settlement. They are then guided down to the Lower Murray Inn for an entertaining and informative discussion about the Murray River, salinity of the Murray Region, the natural salt lakes along the Murray, the environment-now & then and the ever growing issues about water.

A wander over to the Settlement's "Heritage Island" introduces students to our native bush where our very own Koori Elder, Bruce Baxter gives an entertaining and informative presentation on the early aboriginal inhabitants of the region.

Students are then welcome to "scoop" the water out of the Murray, with stocking net scoops (provided), study and identify, using charts provided, macro invertebrates and the biodiversity of the river.

They will then take a break for lunch (usually provided by your accommodation house) before boarding their coach for a 20 minute drive to the Nyah State Forest. Brian Safe, an accredited outdoor education teacher greets students at the entrance to the Forest and takes them on a discovery tour of the natural environment along the banks of the Murray River.

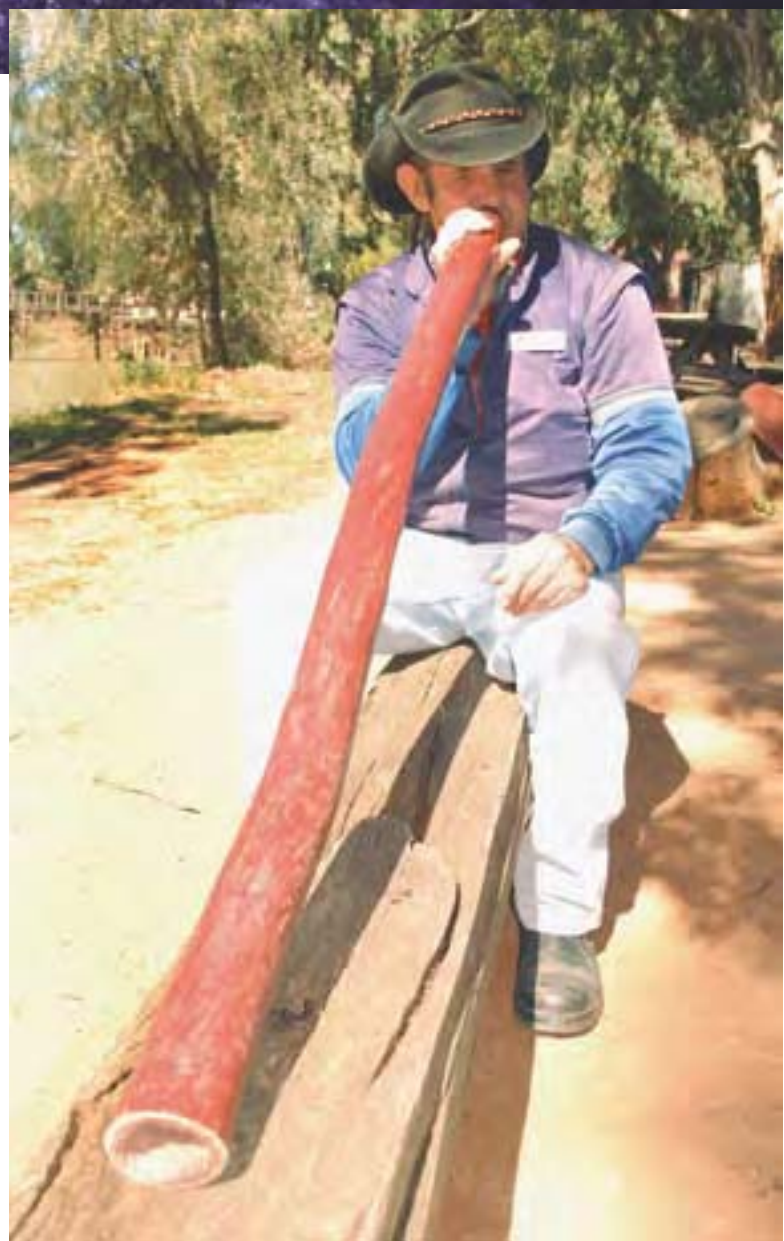


Students will learn about the culturally significant aboriginal sites in the forest, such as middens, scar trees, ring trees and canoe trees. They will also see wildlife and birdlife in their natural habitat and learn basic bush survival skills.

Students then board their coach for a 40 minute drive to Lake Boga to enjoy afternoon refreshments on the banks of the Lake before their visit to the Lake Boga Observatory and Planetarium.

Lake Boga Observatory & Planetarium houses one of Victoria's most powerful telescopes. Students can view the stars day and night. In the day program students observe solar activity and during the night program they study the galaxies and solar systems. Even when our clear northern skies summon up a few clouds they can view the galaxies by projection onto the ceiling.

This program is an exciting way to enhance your students' environmental studies and introduce them to astronomy.



study tour focus programs



Study Tour A

A fun and educational tour of the Pioneer Settlement during which students are encouraged to participate in the dramatisation of life aspects in the days of our Australian pioneers.

Duration: 1 ½ hours

Study Tour B

A conducted tour, similar to Study Tour A, however, with emphasis on a theme of your choice – ie:

Transport: land and river, Domestic Life, Pioneer Technology, Technological Change and Agricultural Machinery, Building and Materials.

Duration: 1 ½ hours

Pioneer Activity Program

A 2 hour “hands-on” program where students are placed into small groups which rotate through a series of 20 minute activities. Activities may include: Pioneer Games, School “as it used to be”, Peg Doll making, Building “with what was available”, Blacksmithing, Morse code and Rope Making. Activities in this program may be altered to suit the VELs level of your class. Duration: 2 ¼ hours.

Aboriginal Culture

Lessons in the traditional Aboriginal ways by a local Aboriginal Elder. Our Aboriginal Educator weaves a story about life in pre-European times and incorporates an environmental message. It includes examples & explanations of Scar trees, Canoe trees and Ring trees, aspects of the hunting-gathering culture, and the roles of various tribe members. This activity is usually taken in conjunction with the Pioneer Activity Program.

Duration: 45 mins

Combinations

Pioneer Activity & Aboriginal Culture Program

Duration: 3 hours

Pioneer Home Life Program

Students rotate in groups “living the life of a pioneer in the Victorian Mallee – 1830-1930”. Activities include cooking their own lunch of stew, damper and homemade cordial, boiling the copper and washing clothes, and other domestic activities.

Duration: 9am – 1pm

INCLUDES LUNCH



Sound and Light

A great way to start your school camp in Swan Hill. After dark, students are escorted into the Settlement where they will board the transporter. As they slowly pass by the buildings each building lights up and tells the story of by-gone days. Great effects and an exciting first night activity.

Duration: approx. 1 hour

Mystery Trails

Several mystery trail activities are available where students explore the settlement and discover the answers to the questions provided.

Duration: unrestricted

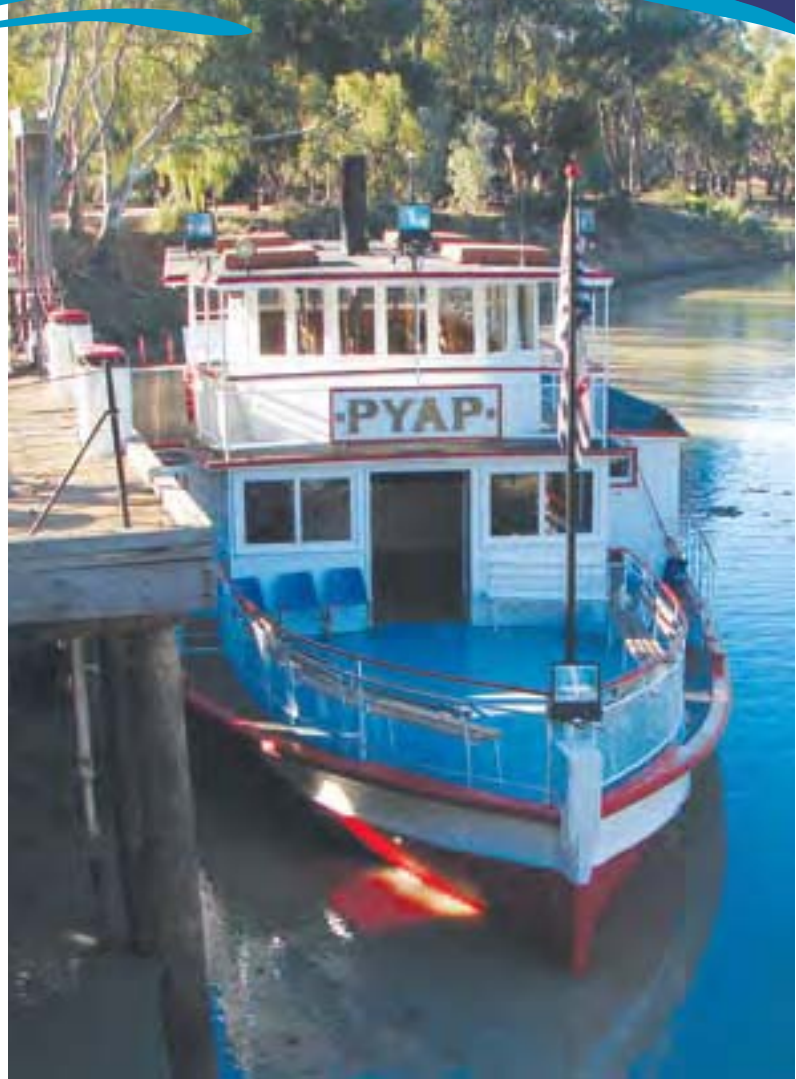
Creative Hands and Minds

Students participate in a Drama activity: they are given a pre-written script (several topics available) with costumes and perform the drama activity, then participate in a creative writing activity by creating their own drama script, short story or poem.

Duration: 2 – 3 hours depending on group size

Murray River Cruise

Experience a relaxing one hour cruise aboard the P.S. Pyap Paddlesteamer (built 1896). The Captain

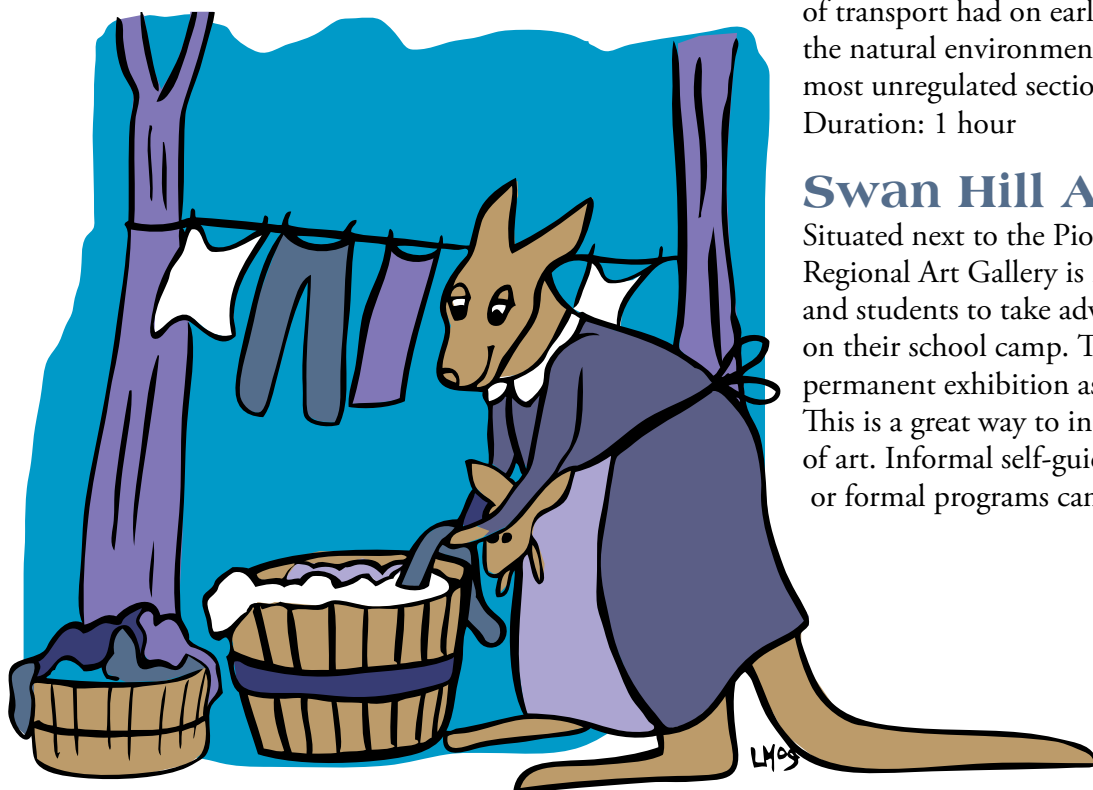


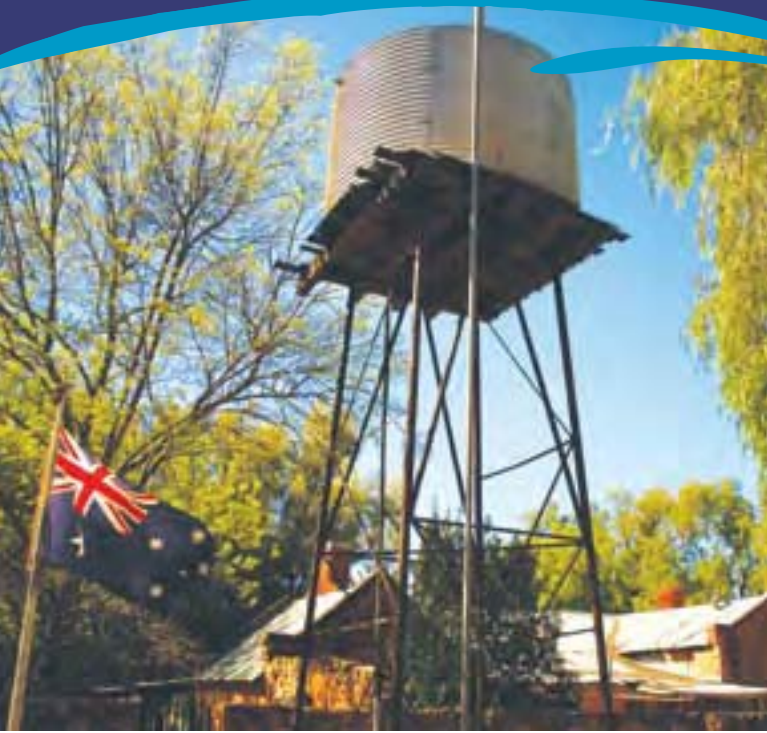
narrates the riverboat history, the influence this form of transport had on early settlement along the river and the natural environment. The river at Swan Hill is the most unregulated section of the Murray.

Duration: 1 hour

Swan Hill Art Gallery

Situated next to the Pioneer Settlement the Swan Hill Regional Art Gallery is ideally positioned for teachers and students to take advantage of during “free time” on their school camp. The gallery has an excellent permanent exhibition as well as touring exhibitions. This is a great way to introduce students to the world of art. Informal self-guided tours are available daily or formal programs can be organised on request.





Tyntyndyer Homestead

Built in 1846 Tyntyndyer Homestead is a fascinating insight into early Australian life from the time of the WattiWatti people “farming” the land, through European settlement, to present time.

Students are intrigued with the amazing inventions they discover, throughout the Homestead from the early days. An excellent, entertaining and educational tour is conducted through the Homestead, cellar, school house and kitchen.

The Pheasant Farm

The largest Pheasant Farm in Australia producing approx. 26,000 birds per year for restaurant markets in Australia. The walk-in aviaries house a beautiful collection of brilliantly coloured Asian and Indian birds. An excellent presentation is given to the students about the different types of pheasants, peabirds and fowls. During the season the hatchery is also open for students to observe eggs hatching and young chicks.

Lake Boga Observatory and Planetarium

Available for day or night program. Your students can “come out and meet the stars” through the telescopes. This is a brilliant glimpse into the world of astronomy. Also be sure not to miss Bogartz Glass Studio which is also part of this tour.

Sharlea Shearing Shed

Sharlea stud produces fine micron merino wool. The sheep are comfortably housed indoors, wear coats to protect their fleece and produce some of the finest merino wool in the world. Students are given an informative and fascinating presentation in the sheds, a shearing demonstration is performed and the process of classing wool is observed.



Rotary Dairy

One of the largest rotary dairies in the Southern Hemisphere. Milking 1300 cows morning and night – 93 cows on the rotary at a time, a great experience for students while they stand on the viewing platform and learn about rural industry. During calving season students help feed the calves. Excellent, educational presentation by Brian Safe.

Available 3:30pm every afternoon.





Speewa Bush Dance

A great night activity. Students are taught basic steps to square dances and bush dances and enjoy a social, interactive evening.

Sonre Farms

This working farm produces olives, almonds and pistachios students are given an informative presentation and learn about rural life as they tour the farm.

Catalina Flying Boat Museum

WW2 history – an authentic secret communications bunker on the banks of Lake Boga has been re-established as the Catalina Flying Boat Museum and houses memorabilia and artefacts from WW2. A video presentation using actual footage of WW2 in the theatre gives students an insight into how the base was used during wartime. They will then have an opportunity to explore the bunker. (Interactive displays)

Nyah Forest Outdoor Education

Brian Safe, a qualified outdoor ed. teacher, conducts several excellent educational programs in the Nyah Forest i.e.: orienteering, “Little Boy Lost”. These programs are conducted in the natural environment of the Nyah State Forest. Students will learn basic survival skills and discover more about the world around them.

