

Group Tours

Swan Hill and District

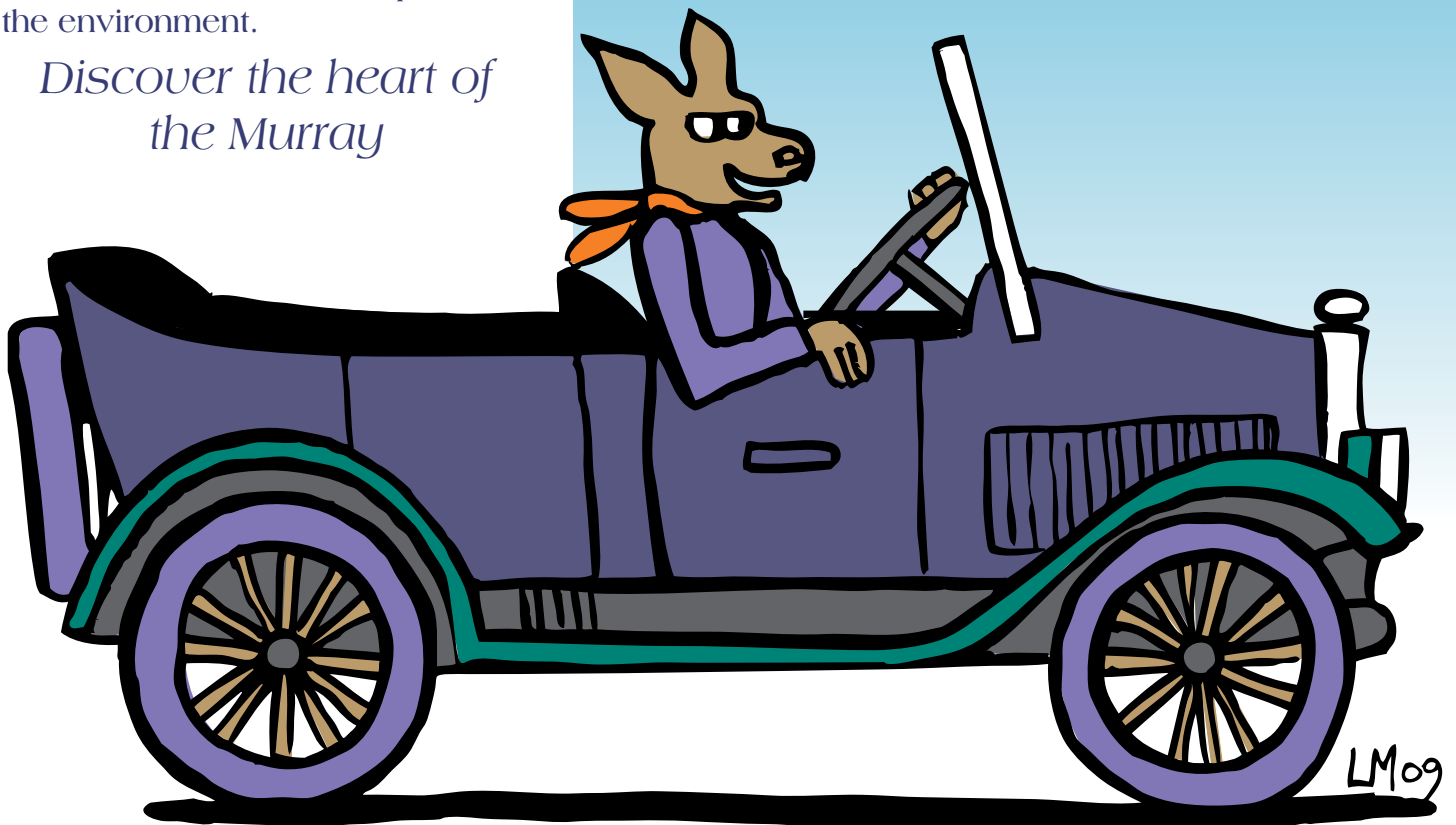


**PIONEER
SETTLEMENT**
— SWAN HILL —

Five fair-dinkum fun-filled days!!

Visit the farms, meet the people,
tour the attractions and explore
the environment.

*Discover the heart of
the Murray*





I would like to introduce you to the exciting attractions, activities and entertainment that your passengers will enjoy when you make Swan Hill your holiday destination.

Swan Hill has often been viewed as a “drive through” or an “on your way to” and therefore, over the years, it has been greatly underestimated and underutilised. Now, when coach groups are looking for something different, and there is so much “been there and done that” attitude, I would like you to take a fresh look at what Swan Hill has to offer and have the opportunity to revitalise your passengers and add an extra edge to your travels.

This unique Swan Hill/Murray River region, from Lake Boga through to Robinvale, is full of hidden treasures just waiting to be discovered.

Swan Hill has excellent group accommodation, at affordable prices, in the heart of the town, close to clubs, shops and cafes.

Your days in Swan Hill will be filled with new, exciting & fun filled activities and your nights will be filled with entertaining outings, wining, dining and socialising, as you and your passengers discover the treasures this region has to offer.

In the following pages you will find five fantastic itineraries. These activities can also be mixed and matched to suit your length of stay and budget. All activities are priced for your convenience and grouped together for economy of travel. The activities are unique, exciting and totally different from what travelling groups would normally expect.

I would be very happy to assist you, in any way, to make your and your passengers’ stay in Swan Hill an enjoyable and memorable experience.

For information on bookings, availability of activities, great places to stay or best places to dine please contact me anytime.

Glynis Pitts
Bookings Officer

Pioneer Settlement - Swan Hill – Victoria

Phone: (03) 5036 2416

Fax: (03) 5032 1096

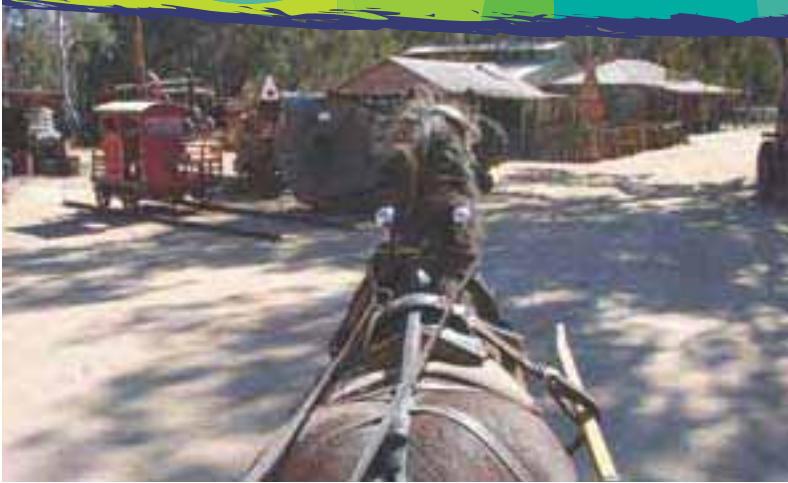
E-mail: gpitts@swanhill.vic.gov.au

Website www.pioneersettlement.com.au

step into the past...



now and then



9:00am Swan Hill Town Tour

The day commences with a tour of the beautiful rural city of Swan Hill. The Swan Hill guide will board the coach with visitors as they travel through the streets of Swan Hill. The guide will entertain the passengers with anecdotes and stories about Swan Hill and point out all the areas of interest including historic sites, new developments, the industrial sites, stock sales complex, and our beautiful residential areas.

Duration approx. 1 hour

Cost: \$55.00 per coach group (Averages out to \$2.75 per person on group of 20)

10:00am Pioneer Settlement

Arrive at the Swan Hill Pioneer Settlement and head straight to the Dumosa Hall for a delicious Devonshire Tea – fresh scones served with lashings of jam and cream, tea and coffee. Board the transporter and enjoy an entertaining guided tour of the Pioneer Settlement. An excellent presentation is given on the history of the area and the Settlement, the collections, the buildings and the paddle steamers.

Duration approx. 1¼ hours

Cost: \$4.00 per person (Devonshire tea)

11:15am Pioneer Settlement

The enjoyment of the day continues with time to explore the Pioneer Settlement in more detail. Discover the 19th century Kaiser Stereoscopic Theatre, the only working one in the world, the Steam Workshop, the delightful General Store full of sweet treats & souvenirs, the magical Music Shop, the Blacksmiths, the Pioneer

homesteads, and the amazing collection of heritage buildings, machinery and memorabilia. Visitors will also discover the delights of "Settlement travel" with horse drawn vehicle and vintage car rides.



12:30noon Time for a break!

A delicious light lunch is now ready to be served at the Dumosa Hall – assorted sandwiches, slices and tea and coffee.

Duration approx: 1 hour

Cost: \$8.00 per person

1:30pm Spend a very pleasant afternoon discovering more at the Pioneer Settlement.

3:30pm Swan Hill Shopping Centre

It's now time to board the coach and travel to the Swan Hill Town Centre. Enjoy the excellent shopping that's available all year round; great bargains, super customer service and friendly, country hospitality.

Duration as required

6:30pm Swan Hill Club

Tonight dine in the air-conditioned comfort of the Swan Hill Club and enjoy a delicious selection of freshly cooked meals, friendly atmosphere and great service.

Duration: 2 hours Cost: \$10.00 pp (pre booked)

At dusk (confirm departure at time of booking)

Sound & Light Show

What a fantastic way to finish the day!! Return to the Pioneer Settlement, after dark, and board the transporter for a "journey back in time". The Sound & Light Show tantalises the senses and the imagination. Travel silently through the Settlement - stopping along the way at homesteads, blacksmiths shop, church, stores, wharf, aboriginal site, and the Lower Murray Inn. At each stop the building lights up depicting the activities of the Pioneers life and the story is told of bygone days. This is an excellent way to start your holiday in Swan Hill.

Duration: 1 hour

Cost: \$16.80 per person (Pioneer Settlement Admission & Sound & Light)

Please note: further discounted package available to also include the Pyap River Cruise.

Total cost for the full day including morning tea, lunch & dinner: \$41.55 per person

a day on the farm

8:15am Lower Murray Inn

Arrive at the Pioneer Settlement and be guided to the Lower Murray Inn for a wholesome, hearty and healthy big country breakfast of bacon, grilled tomatoes, eggs & damper and porridge with fresh milk & honey, seasonal fresh fruit, billy tea & coffee.

Duration: 1 hour approx.

Cost: \$15.00 per person

9:15am Pioneer Settlement Shearing Shed

Enjoy a light hearted, informative and entertaining glimpse into "life as a sheep" and how the wool industry works.

Duration: 45 minutes

Cost: \$5.00 per person

10:15am Swan Hill livestock markets

On alternate Tuesdays (sheep) and Thursdays (cattle) the Swan Hill livestock markets are open and make for an interesting stop-over. The movement of the livestock, the call of the auctioneer and the bustle of the busy yards creates an exciting atmosphere and something very few people get to experience. The auction room for the cattle is undercover and there is seating around the sales arena.

Duration: as required

Cost: free of charge

11:30am The Pheasant Farm

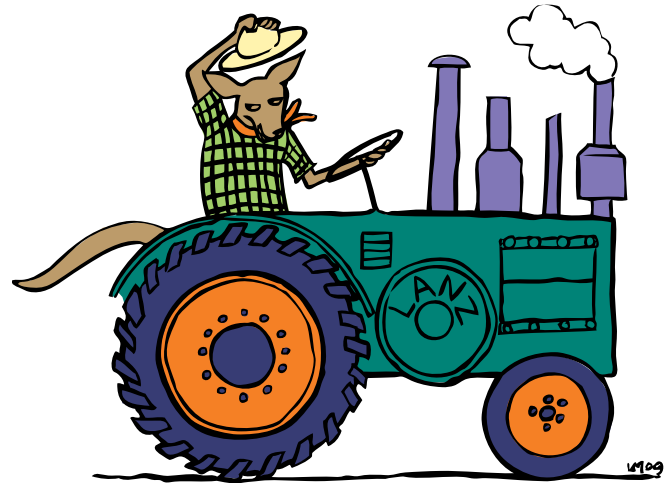
The Pheasant farm is the largest commercial pheasant farm in Australia. 26,000 birds are produced every year for restaurant markets. An interesting narration is given as visitors tour the walk-in aviaries and hatchery. A huge variety of exquisite, coloured pheasant, pea birds and different fowls are on display. The chicks in the hatchery are always a delight.

12:30pm Lunch

After touring the Pheasant Farm, be ready for a delicious gourmet lunch of pheasant terrine and local produce or simply a light lunch of sandwiches and cake. Whatever your choice of menu a lunch in the shady gardens is always an enjoyable experience.

Duration: 1 ½ hours approx.

Cost: \$15.00 per person. including tour, 3 course lunch and tea & coffee



1:45pm Sonre Farms

Sonre Farms is a short drive back towards Swan Hill, along the Swan Hill-Woorinen Road. This commercial property, owned and operated by the Mangiameli family, produces olives, almonds and pistachios. Enjoy an informative presentation on the horticultural industry, while touring the farm with the opportunity to taste test the produce from the property. Sonre is famous for their delicious products of jams, relishes and marinated olives. Sonre's products are made on the property all from home grown fruits. They also have a beautiful tea room, delightful atmosphere and good country hospitality.

Duration: 1 ½ hour approx.

Cost: \$10.00 per person (with afternoon tea and tastings)

3:15pm The Rotary Dairy

Heading back towards Swan Hill, we cut across through Chillingollah Rd. to the Murray Valley Highway, through Swan Hill and out to Glowery's Rotary Dairy. This working dairy milks morning and night all year round. This is an amazing activity to see and visitors are welcome to stand on the viewing platform and watch it working. An interesting presentation is given on how the milking industry works. Visitors can hand feed the calves (in season).

Duration: 1 hour approx.

Cost: \$5.00 per person.



"A Day on the Farm"

is a great rural experience that gives a glimpse into the heart of Australia; the people, the produce, the way of life.

Total cost for the day; (per person) \$50.00 including – cooked breakfast, morning tea, 3-course lunch and afternoon tea plus all activities

wool, war and other worlds

9:15 am Sharlea Shearing Shed

Be welcomed with an interesting presentation on the production of fine micron merino wool; enjoy a tour of the sheep sheds, shearing shed, a shearing demonstration and wool classing.

10:15am Burrabliss Tea Rooms

Burrabliss is part of the Sharlea fine micron merino complex. Visitors sit down in the tea-rooms for a delicious morning tea of hot scones, served with lashings of jam & cream, tea and coffee.

Duration approx. 1 hour 45 minutes

Cost: \$10.00 per person (Tour & morning tea)

11:00am Catalina Flying Boat Museum

Enter the secret communication bunker, established during WW2 as part of Australia's inland defence, on the shores of Lake Boga. The bunker houses an excellent collection and display of WW2 memorabilia and artefacts. Visitors enjoy a video presentation of original WW2 footage in the theatre and then explore the fascinating collection.

Duration approx. 1 hour

Cost: \$3.00 per person

12:00 noon

Lunch – The Commercial Hotel - Lake Boga

Relax in this lovely old pub and enjoy good country cooking at affordable prices. Air-conditioned in summer & heated in winter.

Duration as required

Cost: \$10.00 per person (sandwiches, cakes, tea and coffee)

1:30pm Bests Winery – Cemetery Drive

Enjoy a self-guided tour of the Lake Boga area and the Old Cemetery (a guided tour of cemetery can be arranged) and then it's off to Best's Winery for a taste of the local vintage.

Duration: as required

Cost: free of charge



2:30pm Lake Boga Observatory & Planetarium & Bogartz Glass Studio

“Come out and meet the stars” during their day viewing at the Planetarium. Night tours of the observatory are also available. Solar Observing is available during daylight hours and is part of the Planetarium Daylight Viewing. Also visit the Glass Studio featuring works by local artist John Fowler who specialises in the art of contemporary slumped glass.

Duration 1½ hours

Cost: \$10.00 per person

This is a delightful day's itinerary includes lots of variety, hands-on activities and something for everyone, all centred in the Lake Boga district to economise travel.

Overall cost for the day: \$33.00 per person including morning tea & lunch



gardens, galleries and glorious gums



9:00am Nalders Photographic Art Gallery

Arrive at Nalders Photographic Art Gallery for a delightful viewing of “local area” photographs. Superb images of the Mallee and Southern Riverina district depict dust storms, lightning strikes, the magnificent Murray River, the history and heritage of the region and our beautiful sunsets and dawns.

Duration: as required

Cost: free of charge

10:15am Paddlesteamer Pyap

Arrive at the Pioneer Settlement wharf ready to board the Paddlesteamer Pyap for the 10:30am Mighty Murray River cruise. See the magnificent river red gums and glimpse the historic Murray Downs Homestead. Excellent commentary about the history of the river given by Captain Bill Hogg. Tea & Coffee is available on board.

Duration: 1 hour

Cost: \$12.00 per person concession

11:45am Swan Hill Art Gallery

Visitors are now off to see the Swan Hill Art Gallery, situated next to the Pioneer Settlement. Visitors can view the permanent art collection as well as constantly changing touring exhibitions.

Duration: as required

Cost: gold coin donation

12:30pm Lunch

Visit a local Swan Hill café or a delicious lunch at the Dumosa Hall, in the grounds of the Pioneer Settlement, can be organised for as little as \$5.50 per person.

Duration: as required

Cost: \$5.50 per person (Settlement lunch) or as ordered elsewhere

1:45pm Murray Downs Homestead

Visit the historic Murray Downs Homestead for a tour of the historic gardens that surround the mansion. Established in the 1860's the gardens are heritage listed and beautifully manicured. The roses around the croquet lawn originated in France in the 1860's, the Osage orange trees from North America, the butterfly tree from New Zealand. Plants and flowers from all over the world

adorn these magnificent gardens. An interesting and entertaining presentation is given as your visitors are guided around.

(Please note: Murray Downs Homestead gardens is only open to groups staying at the Jane Eliza Motor Inn – Campbell St. Swan Hill)

Duration: approx. 1 hour

Cost: \$FOC (if dining at the Federal Hotel for dinner)

3:15pm Raymers Lakeside Nursery

Visitors can enjoy an excellent presentation during their guided tour through this beautiful commercial ornamental & heritage rose nursery. Then simply sit back, relax and “smell the roses” while enjoying a nice cuppa; a delightful way to complete an excellent day.

Duration: as required

Cost: \$3.50 per person including tea/coffee

6:00pm Federal Hotel – Murray Downs

After a great day out your passengers can now sit back and enjoy a delicious country meal in air conditioned comfort at the Federal Hotel – just across the bridge from Swan Hill. Good food, good company and country hospitality.

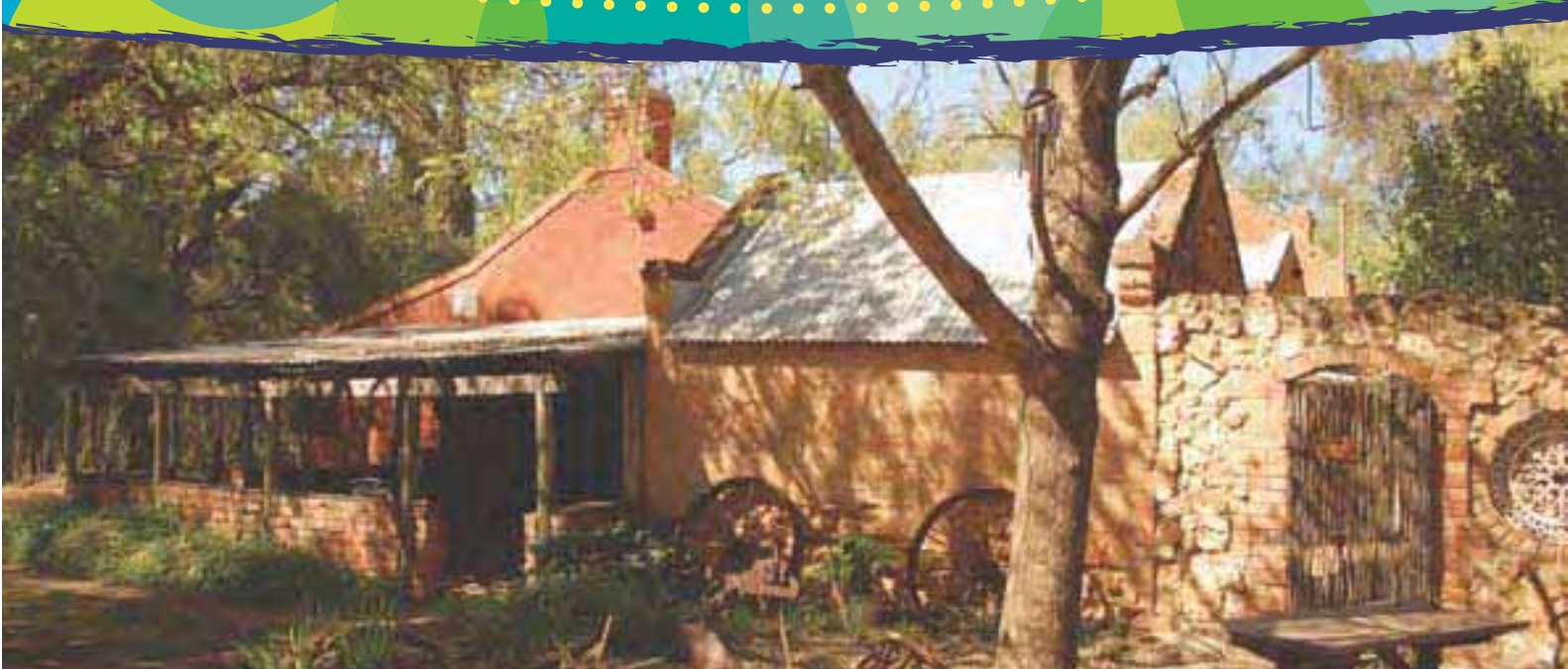
Duration: as required

Cost: \$15.00 - \$18.00 per person

Total cost for the day (per person) \$40.00 including lunch, afternoon tea, dinner and all activities.



heritage and rural life



9:15am Tyntyndyer Homestead

Tyntyndyer Historic Homestead (1846) offers an excellent, entertaining and informative tour of the historic homestead, museum, school house and kitchen. The homestead houses a rare and authentic collection of pioneer memorabilia and aboriginal artefacts.

10:00am Tyntyndyer Homestead Tearooms

After the tour of the homestead sit back and relax in the Homestead tearooms and enjoy a cuppa and cake.

Duration: approx 1½ hours

Cost: \$6.60 per person including tour and morning tea

12:30pm Euston Club

Sit back and relax at the Euston Club, just over the river from Robinvale, and enjoy a delicious luncheon and perhaps a dabble on the pokies.

Duration: as required

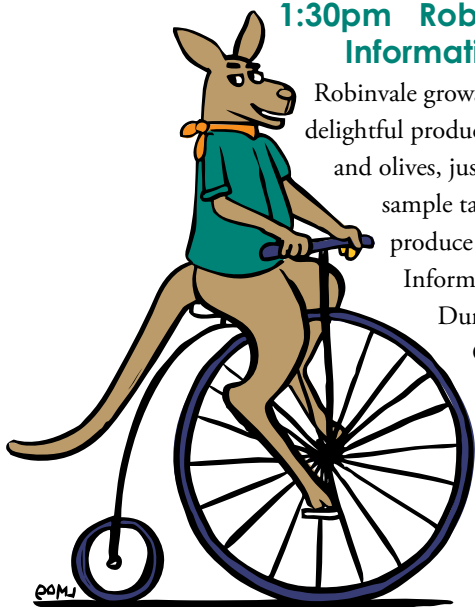
Cost: \$5.00 - \$12.00 per person depending on order

1:30pm Robinvale Information Centre

Robinvale grows an abundance of delightful produce: almonds, pistachios and olives, just to name a few. Enjoy sample tastings, and purchase produce from the local area, at the Information Centre.

Duration: as required

Cost: Free of Charge



2:00pm Robinvale Rural Life Museum

Enjoy a “moment of memories” or an intriguing journey into the past and explore the Rural Life Museum at Robinvale. The museum has a wonderful collection of machinery, household items, war memorabilia and an interesting array of equipment, from bygone days in the region, which depicts the development of the dried fruit industry. The museum is lovingly tended by volunteers.

Duration: approx 1 hour

Cost: gold coin donation

3:15pm Robinswood Homestead

This beautiful old homestead overlooks a tranquil and scenic part of the Murray River. Robinswood is full of character and history. Built in 1926 the homestead stands today as a tribute to the Cuttle family. Enjoy a delightful Devonshire tea or light lunch. Bookings are essential.

Duration: as required

Cost: gold coin donation

6:00pm Tooleybuc Sporting Club

A 1 ½ hour drive and across the Murray River, over the Tooleybuc Bridge, is the Tooleybuc Club, ideal for dinner. A delightful setting, on the banks of the Murray, also a beautiful spot for a river stroll before dinner and of course there is always the pokies for after dinner.

Duration: as required

Cost: \$10.00 per person (to stay 3 hrs)

Regular menu prices apply

A 40 minute drive and you're back at your place of accommodation in Swan Hill.

Total cost of the day: \$23.60 per person (including morning tea, lunch & dinner)

Evening Programs

Sound and Light Show Pioneer Settlement

Explore the Settlement after dark on a guided transporter. Each building lights up and tells the story of the bygone days of the traditional owners and pioneers.

Duration: 1 hour

Cost: discount packages available

Harness Racing at Nyah

Regularly, on weeknights, throughout the year, first race usually starts at 5pm and last race at 9:30pm.

A great night is on offer with dinner served in the club rooms. Watch the races while dining and then get up close and personal and sit track side. This is a fun event, especially during the balmy spring and summer evenings

Duration: 4 ½ hours (or as required)

Cost: \$TBA per person admission, dinner as ordered

Lake Boga Observatory & Planetarium

“Come out and meet the stars” through the telescopes. This is a brilliant glimpse into the world of astronomy. This program is available regardless of weather conditions. Also enjoy a tour of the glass studio.

Duration: 1 ½ hours (or as required)

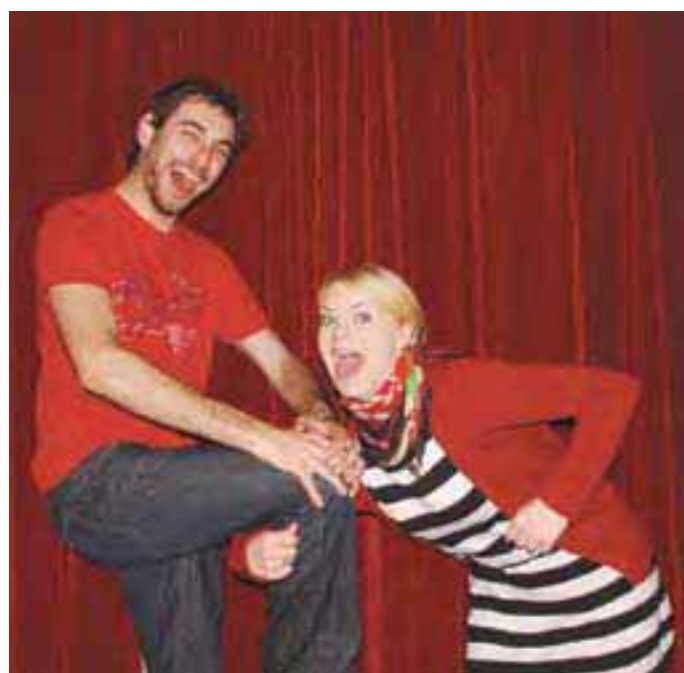
Cost: \$8 per person concession

Swan Hill Performing Arts

Swan Hill offers a range of exciting and entertaining performances suitable for all ages. Visit the Swan Hill Region Information Centre for an up to date performing arts schedule.

Duration: 1- 2 hours (dependent on individual performance)

Cost: \$TBA (dependent on individual performance)



Social Activities

Speewa Bush Dance:

Old time dancing and Square dancing (experienced caller)

Available anytime by appointment.

Tyntyndyer Old Time Dance:

Once a month – held in the hall at Tyntyndyer, just 6km out of Swan Hill. Lovely old-fashion social evening.

Clubs: Murray Downs Golf & Country Club
 Swan Hill Club Federal Hotel
 Commercial Hotel Swan Hill RSL
 Tooleybuc Sporting Club

Sporting Activities

Golf courses: Murray Downs Golf Course
 Nyah Golf Course

Bowling Greens: Swan Hill Central Golf Course
 Swan Hill Bowling Club
 Murray Downs Bowling Club
 Tooleybuc Golf Course

Leisure Centre: Heated pool, Gymnasium, Cafe
 Swan Hill Pool: Outdoor pool, Diving boards
 Café, Water slide

Mini Golf at Tooleybuc Sporting Club:
 Available day & night (under lights)

Wineries

Andrew Peace	Bullers
Robinvale	Swan Hill Vinyards
Bests	Bulga
Renewan	Brumbys
Dos Rios	

Swan Hill Region Tourist Attractions



Tyntyndyer Homestead

\$6.60 per person (group concession price)

Built in 1846, Tyntyndyer Homestead is a fascinating insight into early Australian life – from the time of the WattiWatti people “farming” the land, through European settlement, to present time. Be intrigued by the amazing inventions they discovered, throughout the Homestead, from the early days. An excellent, entertaining and informative tour is conducted through the Homestead, cellar, school house and kitchen. Complimentary morning and afternoon tea always available.

CONTACT: GLYNIS PITTS - 03 50362416

The Pheasant Farm

\$5.50 PER PERSON (group concession price)

The largest Pheasant Farm in Australia producing approx. 40,000 chicks per year for growers to supply restaurant markets in Australia. The walk-in aviaries house a beautiful collection of brilliantly coloured Asian and Indian birds. An excellent presentation is given about the different types of pheasants, pea birds and fowls. During the season the hatchery is also open to view the eggs hatching and the young chicks. Catering for morning/afternoon teas and lunches can be arranged. Enjoy something special such as a delicious pheasant terrine and salad, or simply hot scones, jams with lashings of cream, in the gardens. Bookings available all year round.

CONTACT: KEVIN O'BRIEN - 03 50302648

Lake Boga Observatory, Planetarium and Glass Gallery

\$10.00 night \$8.00 day (seniors' group price)

“Come out and meet the stars” through the telescopes. This is a brilliant glimpse into the world of astronomy. This program is

available regardless of weather conditions. Also visit the Glass Studio featuring works by local artist John Fowler who specialises in the art of contemporary slumped glass.

CONTACT: JOHN - 03 50372428

Catalina Flying Boat Museum

\$3.00 p.p.

Set on the banks of Lake Boga, in an original communications bunker, the Catalina Flying Boat base of WW2, offers a wonderful insight into the war history of the region. An excellent video presentation, in the theatre, shows the war years of the Lake Boga region and how the lake was utilised by our brave soldiers in defence of their country.

CONTACT: DAVID - 03 50372850

Robinswood Homestead

\$gold coin donation

This historic homestead was built c1926 and was home to the Cuttle family. Remaining today in very much its original condition the homestead is an interesting stop over and offers delicious Devonshire teas and light lunches (bookings essential)

Prices range from \$5.00 Devonshire tea to \$12.00 light lunch (2-course)

Rotary Dairy

\$5.00 per person (group concession price)

Milking 1300 cows morning and night, 93 cows on the rotary at a time, this is a great experience for any age group. They stand on the viewing platform and learn about rural industry.

Available 3:30pm every afternoon.

CONTACT: BRIAN SAFE - 03 50324357



Sharlea Shearing Shed

\$10.00 incl. morning/afternoon tea \$15.00 including light lunch (group concession price)

Sharlea stud produces fine micron merino wool. The sheep are housed in air-conditioned comfort, wear coats to protect their fleece and produce some of the finest merino wool in the world. Listen to the excellent presentation in the sheds as well as a shearing demonstration and instructions on the process of classing wool. A delicious morning/afternoon tea or light lunch, at Burrabliss Farm, is included in the package price.

CONTACT: TRISH - 03 50372527



Rural Life Museum

Robinvale

\$gold coin donation

The museum offers a fascinating insight into the early history and development of the Robinvale area. Displays include early machinery, toys, domestic wares and photography.

Robinvale Information Centre

\$FOC

Call in to the information centre for a taste of the Robinvale area! Tastings are available of olives, oils, pistachios and almonds produced in the region.

CONTACT: STAFF - 03 50368011



Robinvale Winery

\$FOC

This is an organic winery

Raymers Lakeside Nursery

\$3.50 per person (incl. tea & coffee)

Commercial Rose & Ornamental Nursery – open to the public – specialising in Heritage Roses. Beautiful spot to stop over and enjoy a “cuppa” in the gardens and let your passengers “smell the roses”.

CONTACT: GARY - 03 50376692

Sonre Farms

\$10.00 per person including morning/afternoon tea and tastings.

Be guided around the working property and listen to the excellent presentation on the regions horticultural industry. Sonre specialises in producing olives, almonds & pistachios. Ben and Roz “value add” to their produce at the property and all are welcome to sample the marinated olives, relishes, oils, jams and sauces produced.

Sonre boasts a beautiful tea-room serving delicious morning/afternoon teas and lunches.

CONTACT: ROZ & BEN – 03 50376790

Swan Hill Region Tourist Attractions



Nyah Forest Eco-Tourism Program

Be greeted at the entrance to the forest and escorted by foot through the natural environment. Brian gives an excellent presentation and interpretation of the forest, canoe trees, ring trees, scar trees, aboriginal mounds and wild life. Enjoy a stroll through nature's backyard where visitors will certainly enjoy the tranquillity of the Nyah Forest and the views from the banks of the Mighty Murray River. This activity is conducted in the natural environment of the Nyah State Forest.

CONTACT: BRIAN SAFE – 03 50324357

Pioneer Settlement

Enjoy stepping back in time when the pace of life was slower, where everyone had a smile and time for a chat. The Pioneer Settlement is an amazing mid 1800's township of original buildings, gathered from the Mallee which interprets life as a pioneer. Experience hands-on activities, Murray River Cruises aboard the PS Pyap, guided transporter tours of the Settlement grounds, vintage car rides and horse drawn vehicle rides. Explore the township shops, the bakery and the blacksmith, the vintage tractor display, and more.

At night the Pioneer Settlement comes to life with the Sound & Light Show. This is certainly a great way to start your discovery of Swan Hill.

CONTACT: GLYNIS

03 50362416





Swan Hill Attractions Contacts

Burra Bliss Farms and Sharlea Shearing Shed	Rotary Dairy	
Trish	Brian	5032 4357
5037 2527	Robinvale Information Centre	5026 1388
Catalina Flying Boat Museum	Raymers Lakeside Nursery	
David	Gary	5037 6692
5037 2850	Sonre Farms	
Lake Boga Observatory & Planetarium	Roz & Ben	5037 6790
John	Speewa Bush Dance	
5037 2428	Des	5037 6307
Nalders Photographic Gallery	5032 2291	5032 4357
Nyah Forest Eco-Tours	Swan Hill Art Gallery	5036 2430
Brian	Swan Hill Information Centre	5032 3033
5032 4357	Tyntyndyer Homestead	
Paddlesteamer Pyap and	Glynis	5036 2416
Pioneer Settlement		
Glynis (bookings)		
5036 2416		
Pheasant Farm		
Kevin		
5030 2648		

Swan Hill Rural City Council does not warrant or represent that the information in this pamphlet/brochure/ website is free from errors or omissions or is suitable for your intended use. Swan Hill Rural City Council recommends that you seek independent advice before acting on any information in this pamphlet/brochure/ website. Subject to any terms implied by law and which cannot be excluded, Swan Hill Rural City Council and its Councillors, officers, directors, employees, agents and associates ("Associates") accept no responsibility for any loss, damage, cost or expense (whether direct or indirect) incurred by you as a result of any error, omission or misrepresentation in any information in this pamphlet/brochure/ website.



PIONEER SETTLEMENT

— SWAN HILL —

Phone: (03) 5036 2416

E-mail: gpitts@swanhill.vic.gov.au

Fax: (03) 5032 1096

Website www.pioneersettlement.com.au

An initiative of

